

## A New Species of *Thaumalea* from California

(Diptera: Thaumaleidae)

DONALD R. BROTHERS

Biological Sciences Department, San Jose State College, California 95114

The genus *Thaumalea* Ruthe is represented in North America by five relatively rare species (Stone *in* Stone *et al.* 1965, Schmid 1970). Of these, only one species, *T. fusca* (Garrett), has been cited as possibly occurring in California (Wirth and Stone *in* Usinger 1963). Cole (1969) cites a specimen "near *fusca*" from Bodie, Mono County, California.

In an attempt to determine the identity of *Thaumalea* specimens collected from Santa Clara County, California, it was discovered that the terminalia of the male specimens differed considerably from those of an unpublished illustration of the *T. fusca* holotype. The ninth tergite of *T. fusca* is void of elongated ventral projections, and the dististyles are without setose lobes or terminal elongated processes. The following description of the undescribed species is published to make the name available for taxonomic studies of this genus.

### ***Thaumalea santaclaraensis* Brothers, new species**

(Figs. 1, 2)

MALE.—Body length 2.5–3.0 mm. Thorax brown. Abdomen brownish black. Antennae 12 segmented; pedicels very large, with long setae; flagellar segments 1, 2, 3, 4, 6, and 8 each bearing long, stout seta. Tip of each terminal segment of antennae also bears two long setae. Wing length 2.75–3.25 mm, uniform light brown; uniformly covered with microtrichia; veins brown; macrotrichia on veins C, R, and R<sub>1</sub>; 8–10 on vein R, and 10–12 on vein R<sub>1</sub>. Halteres elongate, yellow. Legs light brown, darkened distally. Ninth tergite brown, heavily chitinized, about as long as broad, tapering and slightly round apically. Medial ventral edges of ninth tergite produced inward on both sides, forming elongated projections. Basistyles about as long as broad, sparsely and coarsely setose. Dististyles about same length as basistyles; each with prominent setose basal lobe; outer margin bearing two setae; apical end with stout tooth and expanded, elongated, curved process. Parameres simple, rather slender; tips slightly pointed inwards.

FEMALE.—Body length 3–4 mm. Valves of genital plate setose and pointed; tips each bearing two setae. Posterior corners of ninth tergite rounded. Other structures as for male.

*Holotype male* and allotype, from ALUM ROCK PARK, SANTA CLARA COUNTY, CALIFORNIA, elevation 900 feet, 31 July 1971, and 31 May 1971 respectively, (D. R. Brothers). Thirteen male and eight female

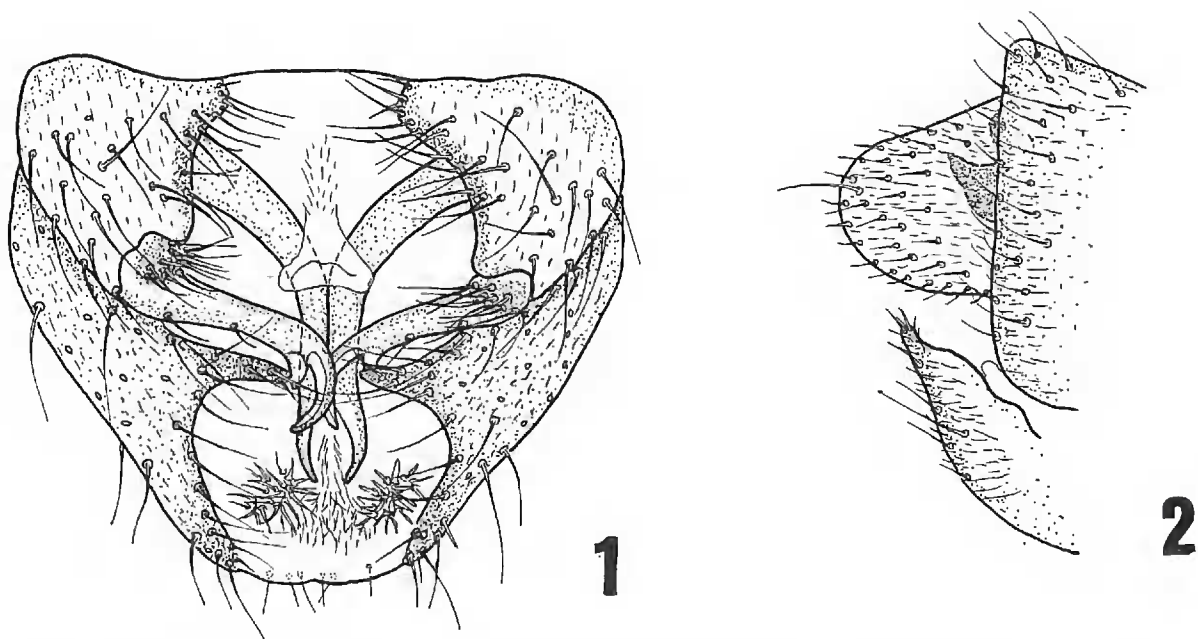


FIG. 1 and 2. *Thaumalea santaclaraensis* Brothers, new species. FIG. 1. Male terminalia, ventral view. FIG. 2. Female terminalia, lateral view.

paratypes were collected from the type locality during June and July, 1971, (D. R. Brothers).

The holotype male and allotype female will be deposited in the California Academy of Sciences, San Francisco, California; paratypes at the California Academy of Sciences, and the U. S. National Museum, Washington, D. C.

Terminalia illustrations are of mounted paratypic material.

#### ACKNOWLEDGMENTS

I thank Dr. P. H. Arnaud, Jr. of the California Academy of Sciences for providing an illustration of the male terminalia of the *T. fusca* holotype.

#### LITERATURE CITED

- COLE, F. R. 1969. The flies of western North America. Univ. Calif. Press, Berkeley, 693 pp.
- SCHMID, F. 1970. Quelques Thaumaleides nouvelles ou peu connues (Diptera, Thaumaleidae). Natur. Can., 97: 499-510.
- STONE, A. 1965. Family Thaumaleidae. p. 120. in Stone, A., et al. 1965. A Catalog of the Diptera of America, North of Mexico. U. S. Dep. Agr., Agr. Handb. 276., 1,696 pp.
- WIRTH, W. W. AND A. STONE. 1956. Chapter 14. Aquatic Diptera. pp. 372-482. in Usinger, R. L. (ed.). 1956. Aquatic insects of California. Univ. Calif. Press, Berkeley, 508 pp.